

975 Cottonwood Ave., PO Box 20, Hartland, Wisconsin 53029-0020, USA | www.dorner.com | info@dorner.com

### LIFT GATE CONCEPT

Standard 2200, 3200 and MPB conveyors can be mounted to a lift gate base creating a conveyor gate that is easily lifted for access through the conveyor line.

### Lift Gate Specifications

- Designs for 2200, 3200 and MPB End Drive Conveyors
- Gearmotor Acts as a Counterweight to Allow for Easy Gate Opening
- Spring Latch Horizontal Position Stop
- Vertical Position Stop
- Gas Shock Controlled Pivot Mechanism
- Easy Access Lift Handles
- Clear Side Guards for Pivot Mechanism Area
- Aluminum Extruded Support Structure with T-slot Construction\*
- $\pm 2$ " Height Adjustment
- Optional Motor Controls (see below)

\*Structure must be bolted to the floor

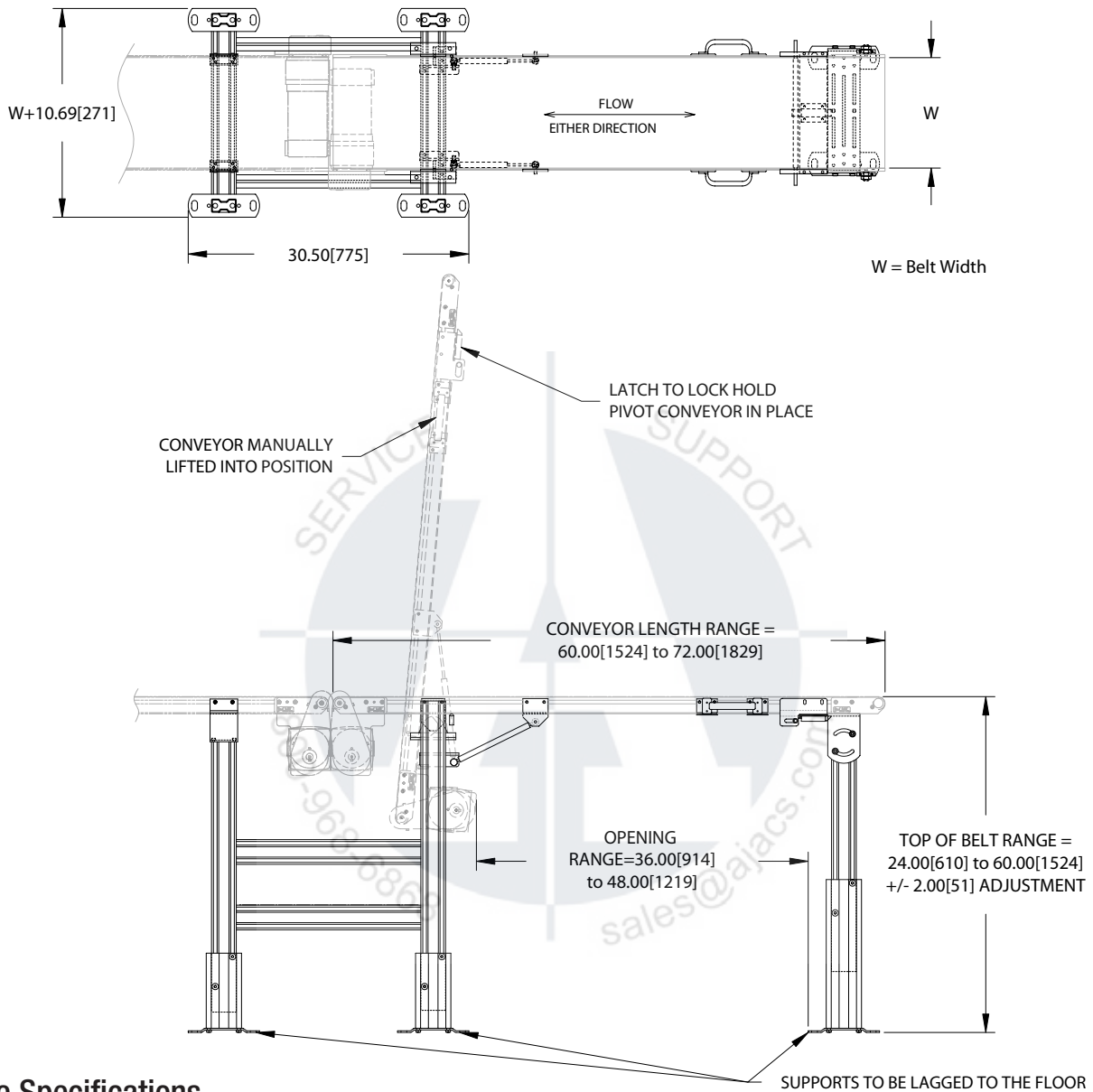


2200 Series  
Lift Gate Conveyor Shown

### Optional Control Features

- "Conveyor Down" interlock switch provides a dry contact signal when the conveyor is in the ready position. Wiring to switches by others.
- Automatic Stop/Start control. Stops the lift gate conveyor motor when lifted and restarts the motor in the "conveyor down" position. Includes interlock switch, motor starter and enclosure. 460-volt models include a transformer/power supply. Power wiring to enclosures by others.
- Automatic Stop/Start control with clearing timer. Pushbutton control starts a timer to clear the conveyor contents before stopping the lift gate conveyor motor. Motor restarts when the gate is lowered to the "conveyor down" position. Includes interlock switch, pushbutton, adjustable timing relay, motor starter and enclosure. 460-volt models include a transformer/power supply. Power and control wiring to enclosure and upstream production equipment by others.

## 2200 Series Dimensions and Lift Gate Layout:

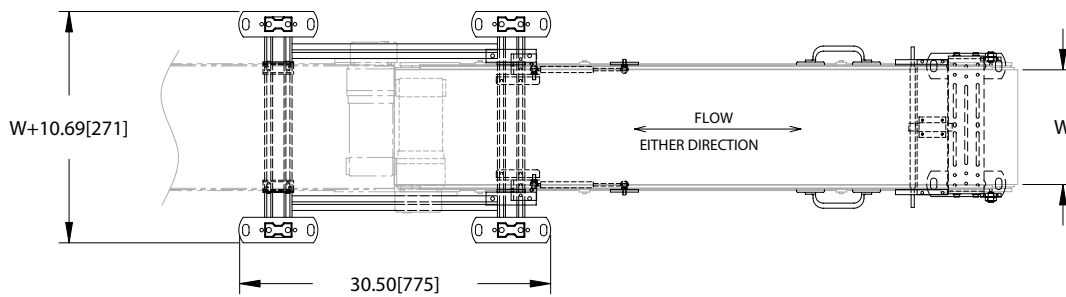


## Lift Gate Specifications

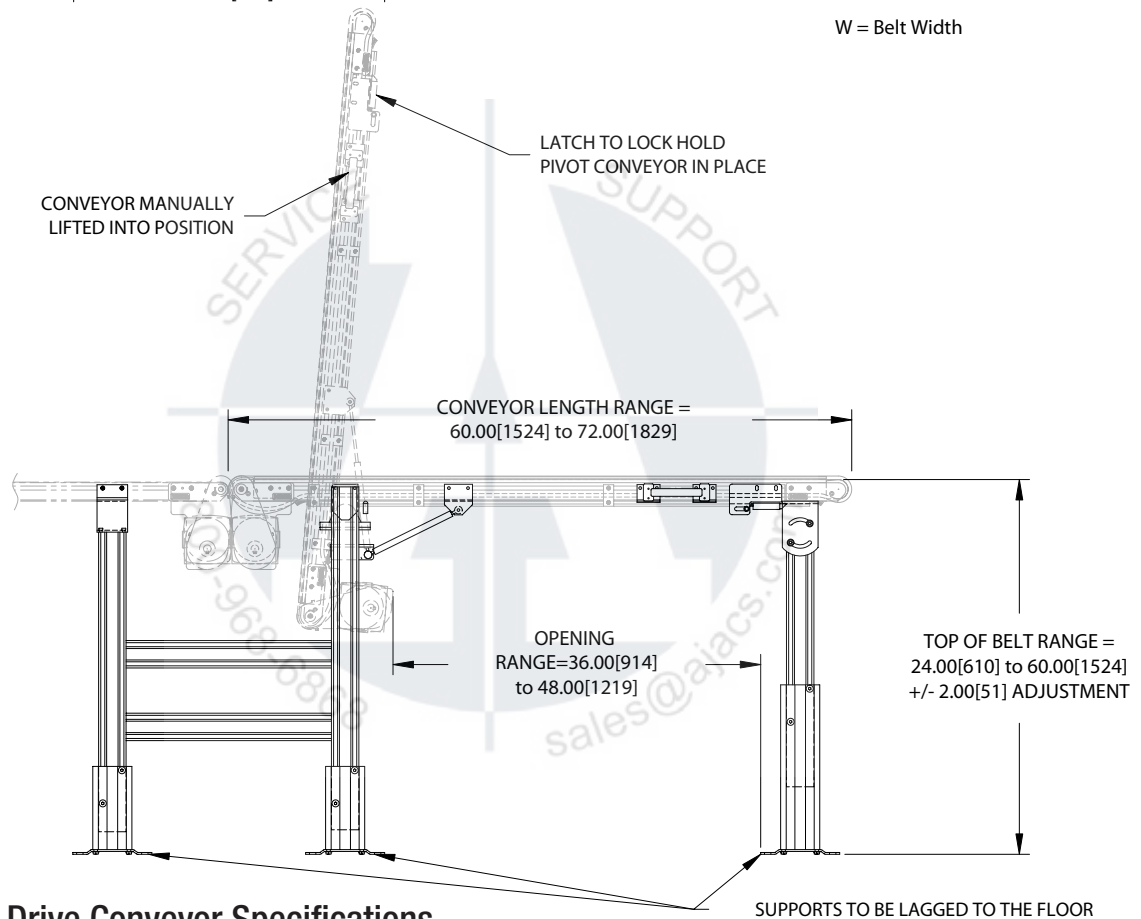
- Aluminum Extruded Frame with T-slot Construction
- Sealed Ball Bearings
- V-guided and Non-V-guided Belt Compatible
- Rack and Pinion Belt Tensioning
- Standard Load Parallel Shaft Gearmotor
- Bottom Mount End Drive
- Conveyor Widths: 1.75" to 24" wide
- Conveyor Lengths: 5' & 6' standard for Lift Gate
- Belt Speeds: up to 264 Ft/Min
- Load Capacity: 80 lbs. (36 Kg)

See Product Engineering Manual or [www.dorner.com](http://www.dorner.com) for details.

## MPB Series Dimensions and Lift Gate Layout:



W = Belt Width

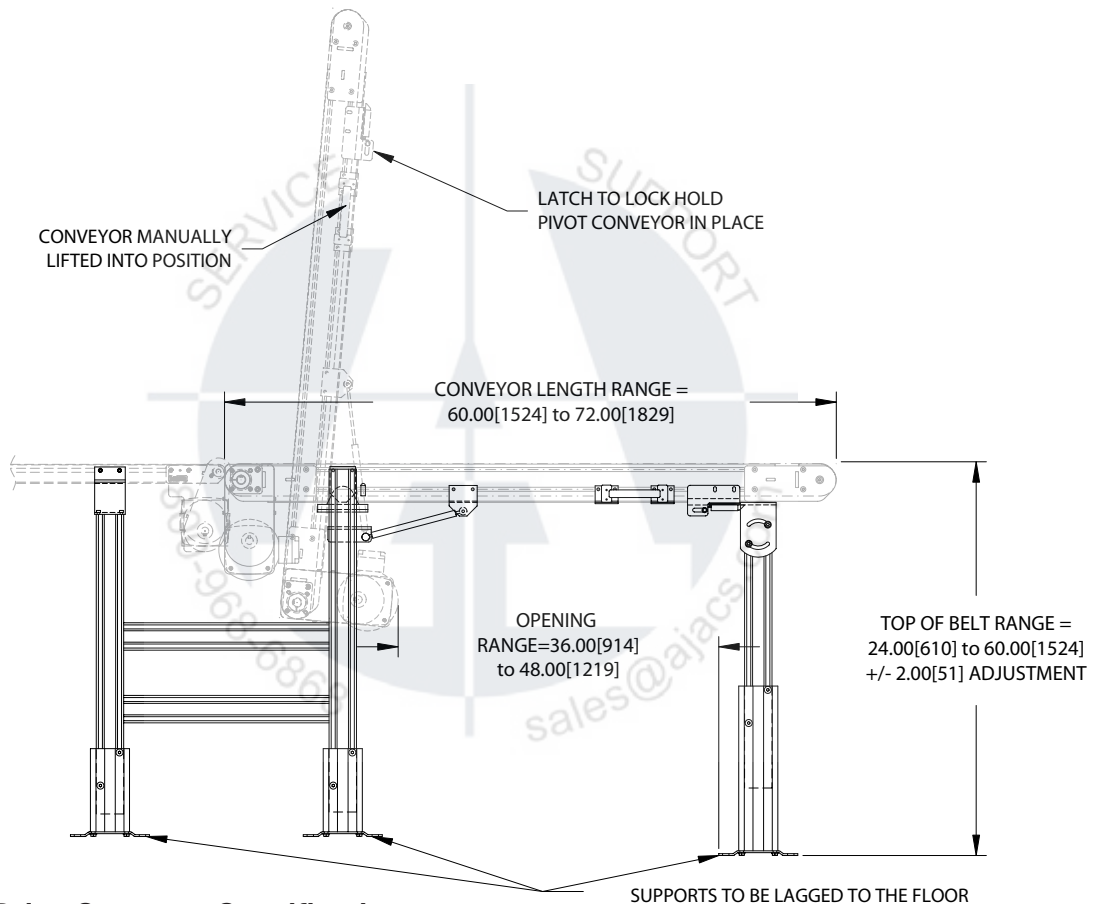
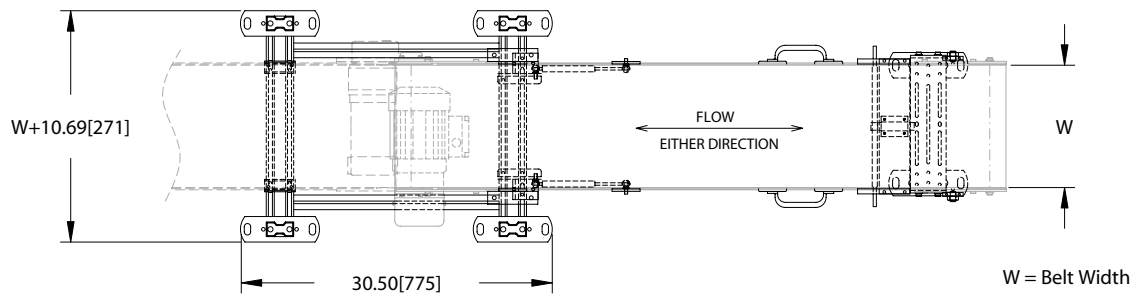


## MPB Series End Drive Conveyor Specifications

- Aluminum Extruded Frame with T-slot Construction
- Sealed Ball Bearings
- Rack and Pinion Belt Tensioning
- Standard Load Parallel Shaft Gearmotor
- Bottom Mount End Drive
- Conveyor Widths: 3" to 23.25" wide
- Conveyor Lengths: 5' & 6' standard for Lift Gate
- Belt Speeds: 250 Ft/Min
- Load Capacity: 150 lbs. (63 Kg)

See Product Engineering Manual or [www.dorner.com](http://www.dorner.com) for details.

## 3200 Series Dimensions and Lift Gate Layout:



## 3200 Series End Drive Conveyor Specifications

- Aluminum Extruded Frame with T-slot Construction
- Sealed Ball Bearings
- V-guided and Non-V-guided Belt Compatible
- Rack and Pinion Belt Tensioning
- Standard Load Parallel Shaft Gearmotor
- Bottom Mount End Drive
- Conveyor Widths: 3.75" to 48" wide
- Conveyor Lengths: 5' & 6' standard for Lift Gate
- Belt Speeds: 421 Ft/Min
- Load Capacity: 400 lbs. (181 Kg)

See Product Engineering Manual or [www.dorner.com](http://www.dorner.com) for details.

## Profiles:

- All 2200, MPB and 3200 Series profiles are applicable.
- See *Product Engineering Manual* or [www.dorner.com](http://www.dorner.com) for details.

## Belting:

- All 2200, MPB and 3200 Series flat belting is applicable.
- See *Product Engineering Manual* or [www.dorner.com](http://www.dorner.com) for details.

## Mounting Packages & Gearmotors:

- Uses bottom mount standard load package for a parallel shaft gearmotor.
- See *Product Engineering Manual* or [www.dorner.com](http://www.dorner.com) for details.
  
- Uses fixed speed and variable speed standard load parallel shaft gearmotors.
- See *Product Engineering Manual* or [www.dorner.com](http://www.dorner.com) for details.



## EXPRESS INQUIRY FORM: GENERAL INFORMATION

*Please complete the specific Lift Gate Conveyor application questions to the best of your ability.*

Contact Technical Sales at 1-800-259-1510 (Press 3) or TechnicalSales@dorner.com for Application Assistance.

<b>CONTACT INFORMATION</b>			
Company:	_____	Date:	_____
Name:	_____		
Phone:	_____	Fax:	_____
E-Mail:	_____		
Address:	_____		
City:	_____	State:	_____
Zip:	_____		

<b>PRODUCT</b>	
Description/Material:	_____
Dimensions:	_____
Weight:	_____
Total Weight to be Placed on Conveyor:	_____
Temperature:	_____

<b>ENVIRONMENT</b>	
Chemicals or Fluids Present:	_____
Unusual Ambient Temperature Conditions:	_____
Other Concerns:	_____

<b>CONVEYOR</b>	
Conveyor Type:	<input type="checkbox"/> 2200 Series <input type="checkbox"/> 3200 Series <input type="checkbox"/> MPB Series
Belt Width:	_____
Conveyor Length:	_____
Belt Speed:	_____ <input type="checkbox"/> Fixed <input type="checkbox"/> Variable    See example on next page for calculating belt speed.
Back Lit Zone Length:	_____
Location of Back Lit Zone:	_____    See sketch on page 4.
Top of Belt Height:	_____
Opening Width:	_____
Belt Direction & Motor Position:	_____

<b>ELECTRICAL</b>	
Voltage:	_____
Phase:	_____
Hz:	_____
For Variable Speed:	<input type="checkbox"/> DC <input type="checkbox"/> AC
Optional Controls:	<input type="checkbox"/> Interlock Switch <input type="checkbox"/> Automatic Stop/Start <input type="checkbox"/> Automatic Stop/Start with Clearing Timers

**FAX COMPLETED FORMS TO 800.369.2440 or 262.367.5827**