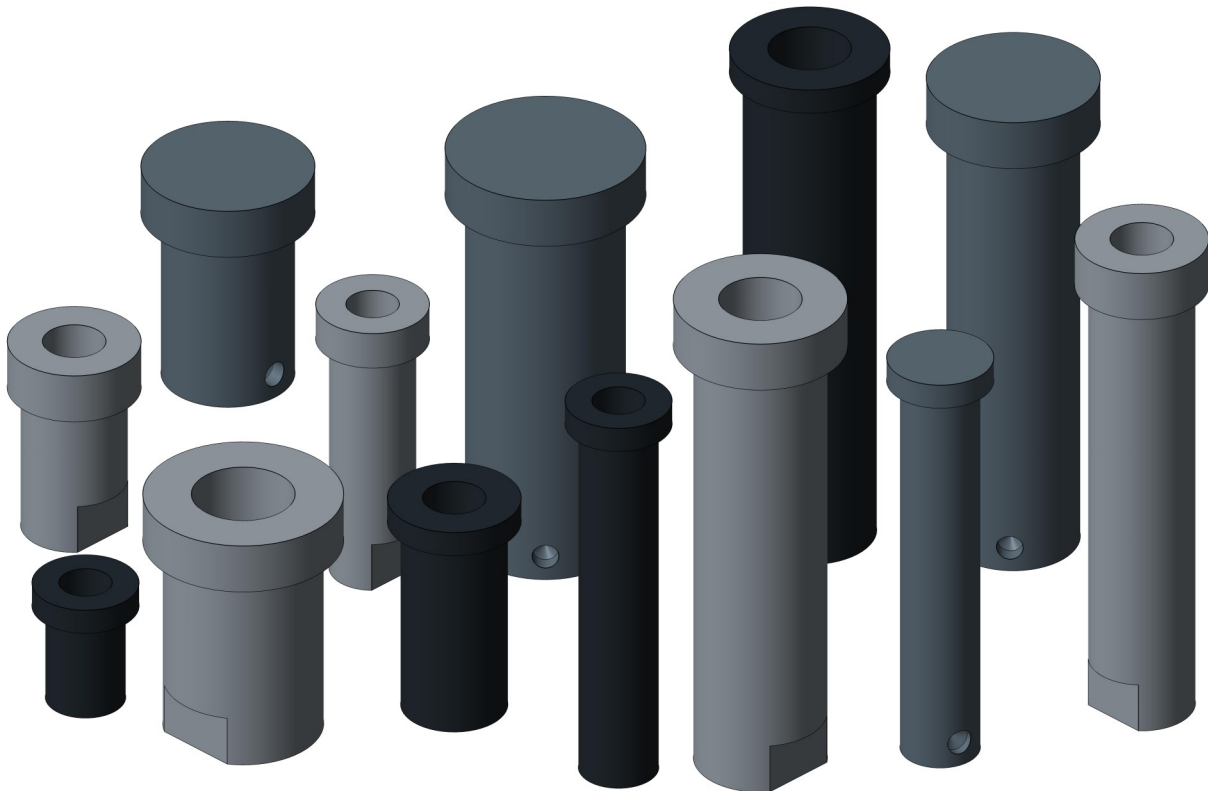
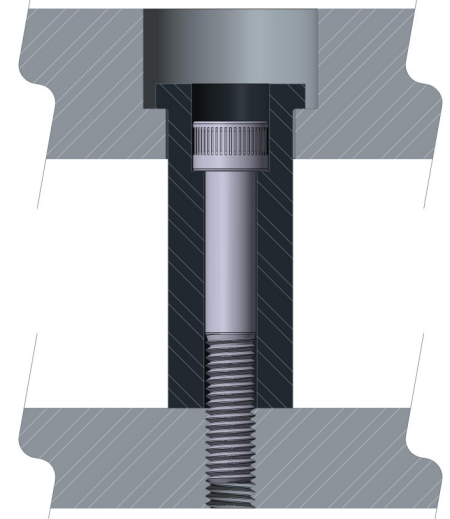
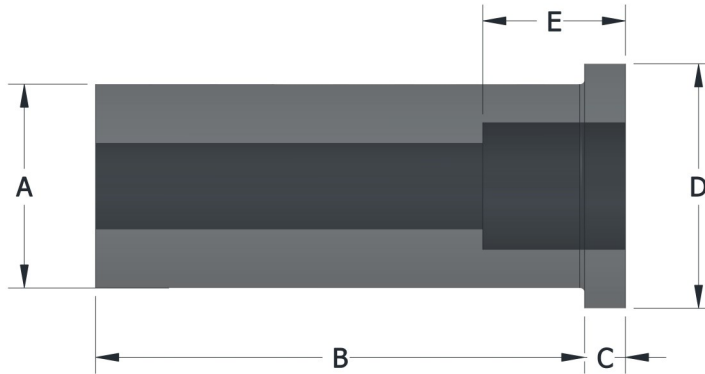
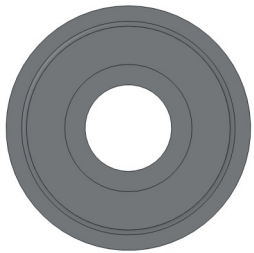


PAD RETAINER SPOOLS

Inch Counterbored Style
Inch Locking Style
Inch Threaded Style
Metric Counterbored Style
Metric Locking Style
Metric Threaded Style



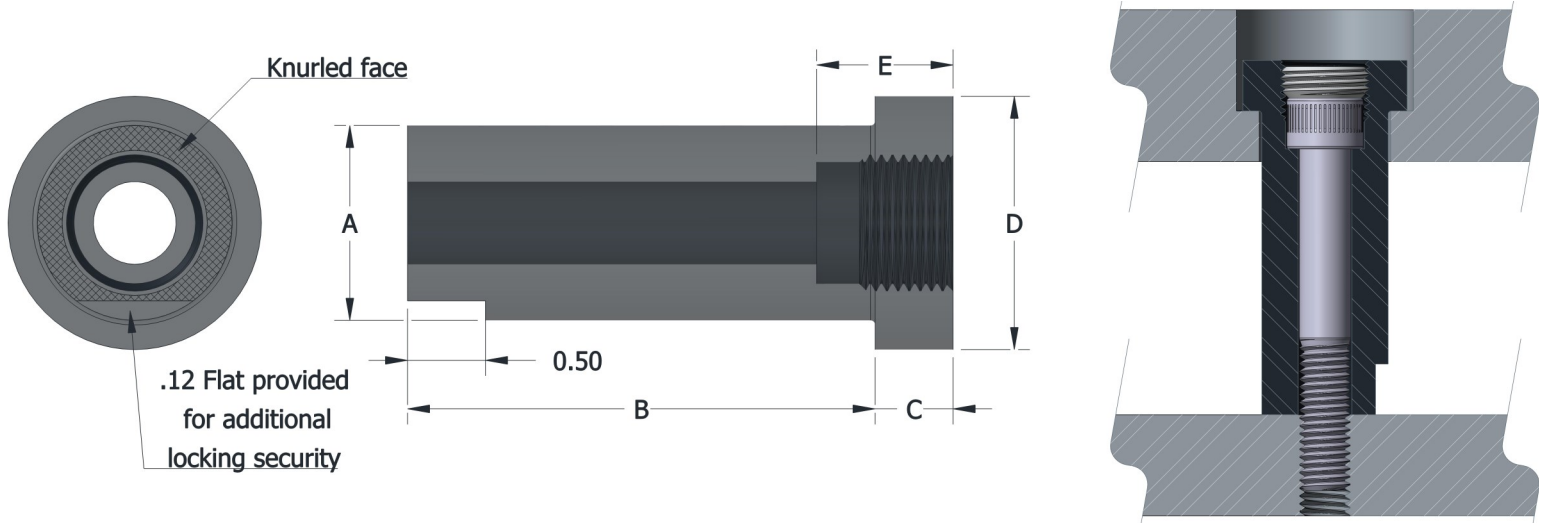
SPOOLS—INCH COUNTERBORED STYLE



Part No.	B +/- .005	E	Part No.	B +/- .005	E	Part No.	B +/- .005	E
MAJ-1000	1.000	0.50	LAJ-1000	1.000	0.50			
MAJ-1250	1.250	0.50	LAJ-1250	1.250	0.50			
MAJ-1500	1.500	0.50	LAJ-1500	1.500	0.50	XAJ-1500	1.500	0.50
MAJ-1750	1.750	0.50	LAJ-1750	1.750	0.50	XAJ-1750	1.750	0.50
MAJ-2000	2.000	0.50	LAJ-2000	2.000	0.50	XAJ-2000	2.000	0.50
MAJ-2250	2.250	0.50	LAJ-2250	2.250	0.50	XAJ-2250	2.250	0.50
MAJ-2500	2.500	0.50	LAJ-2500	2.500	0.50	XAJ-2500	2.500	0.50
MAJ-2750	2.750	0.50	LAJ-2750	2.750	0.50	XAJ-2750	2.750	0.50
MAJ-3000	3.000	0.50	LAJ-3000	3.000	0.50	XAJ-3000	3.000	0.50
MAJ-3250	3.250	0.50	LAJ-3250	3.250	0.50	XAJ-3250	3.250	0.50
MAJ-3500	3.500	0.75	LAJ-3500	3.500	0.75	XAJ-3500	3.500	0.75
MAJ-3750	3.750	1.00	LAJ-3750	3.750	1.00	XAJ-3750	3.750	1.00
MAJ-4000	4.000	1.25	LAJ-4000	4.000	1.25	XAJ-4000	4.000	1.25
MAJ-4500	4.500	1.75	LAJ-4500	4.500	1.75	XAJ-4500	4.500	1.75
MAJ-5000	5.000	2.25	LAJ-5000	5.000	2.25	XAJ-5000	5.000	2.25
A = .750 +.000 / -.010 C = .250 D = 1.000 Screw Size = 5/16			A = 1.000 +.000 / -.010 C = .250 D = 1.250 Screw Size = 3/8			A = 1.250 +.000 / -.010 C = .250 D = 1.500 Screw Size = 1/2		

12L14CRS Material - Hardened to .005/.010 Case Depth

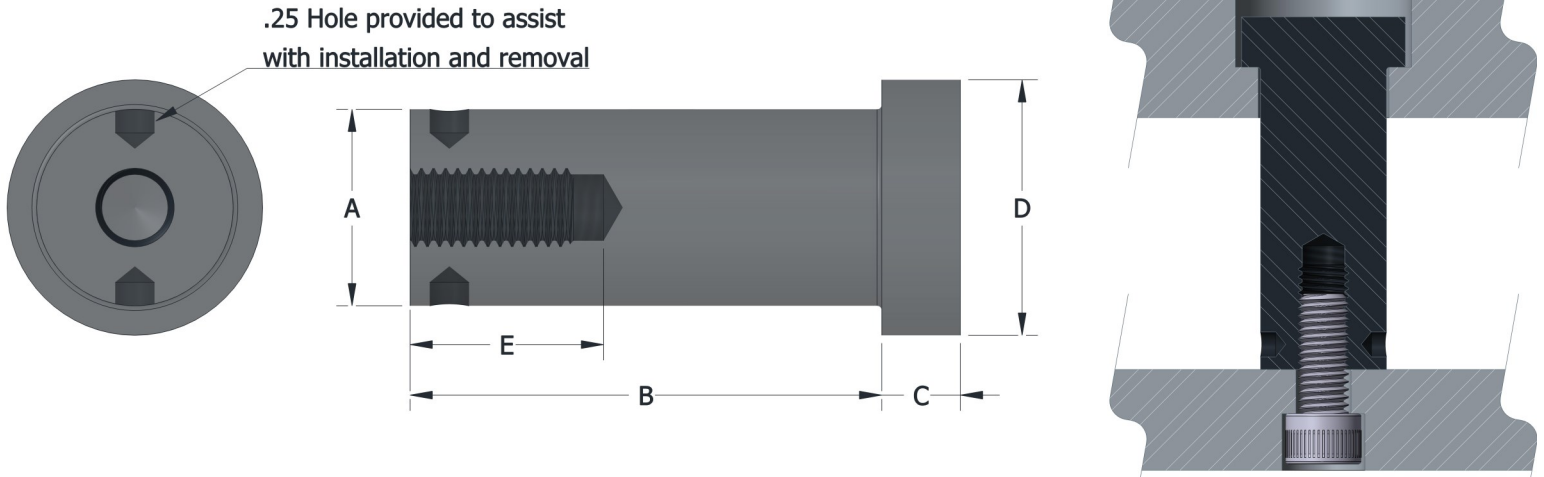
SPOOLS—INCH LOCKING STYLE



Part No.	B +/- .005	Part No.	B +/- .005	Part No.	B +/- .005	Part No.	B +/- .005
AJ-60810	1.000	AJ-61010	1.000	AJ-61110	1.000		
AJ-60811	1.250	AJ-61011	1.250	AJ-61111	1.250	AJ-61211	1.250
AJ-60812	1.500	AJ-61012	1.500	AJ-61112	1.500	AJ-61212	1.500
AJ-60813	1.750	AJ-61013	1.750	AJ-61113	1.750	AJ-61213	1.750
AJ-60820	2.000	AJ-61020	2.000	AJ-61120	2.000	AJ-61220	2.000
AJ-60821	2.250	AJ-61021	2.250	AJ-61121	2.250	AJ-61221	2.250
AJ-60822	2.500	AJ-61022	2.500	AJ-61122	2.500	AJ-61222	2.500
AJ-60823	2.750	AJ-61023	2.750	AJ-61123	2.750	AJ-61223	2.750
AJ-60830	3.000	AJ-61030	3.000	AJ-61130	3.000	AJ-61230	3.000
AJ-60831	3.250	AJ-61031	3.250	AJ-61131	3.250	AJ-61231	3.250
AJ-60832	3.500	AJ-61032	3.500	AJ-61132	3.500	AJ-61232	3.500
		AJ-61033	3.750	AJ-61133	3.750	AJ-61233	3.750
		AJ-61040	4.000	AJ-61140	4.000	AJ-61240	4.000
		AJ-61042	4.500	AJ-61142	4.500	AJ-61242	4.500
		AJ-61050	5.000	AJ-61150	5.000	AJ-61250	5.000
		AJ-61052	5.500	AJ-61152	5.500	AJ-61252	5.500
		AJ-61060	6.000	AJ-61160	6.000	AJ-61260	6.000
A = .8125 +.000 / -.010 C = .375 D = 1.062 E = 1.000 Lock Screw and 5/16 Cap Screw Included		A = 1.000 +.000 / -.010 C = .500 D = 1.250 E = 1.125 Lock Screw and 3/8 Cap Screw Included		A = 1.250 +.000 / -.010 C = .500 D = 1.625 E = 1.125 Lock Screw and 1/2 Cap Screw Included		A = 1.500 +.000 / -.010 C = .500 D = 1.875 E = 1.250 Lock Screw and 5/8 Cap Screw Included	

12L14CRS Material - Hardened to .005/.010 Case Depth

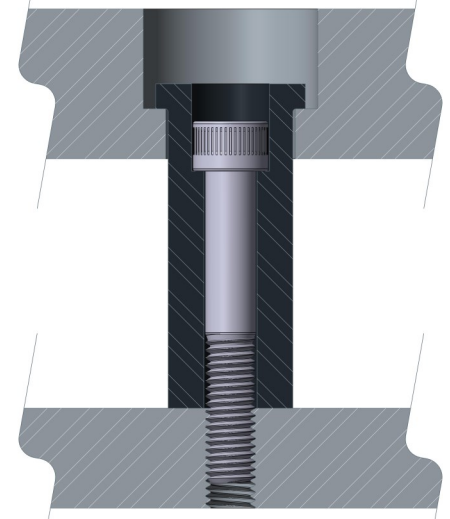
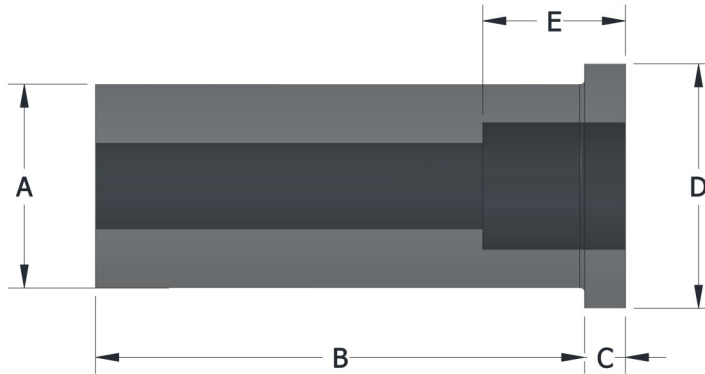
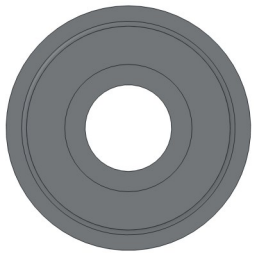
SPOOLS—INCH THREADED STYLE



Part No.	B +/- .005	Part No.	B +/- .005	Part No.	B +/- .005	Part No.	B +/- .005
T-0710	1.000						
T-0711	1.250	T-1011	1.250	T-1111	1.250		
T-0712	1.500	T-1012	1.500	T-1112	1.500	T-1212	1.500
T-0713	1.750	T-1013	1.750	T-1113	1.750	T-1213	1.750
T-0720	2.000	T-1020	2.000	T-1120	2.000	T-1220	2.000
T-0721	2.250	T-1021	2.250	T-1121	2.250	T-1221	2.250
T-0722	2.500	T-1022	2.500	T-1122	2.500	T-1222	2.500
T-0723	2.750	T-1023	2.750	T-1123	2.750	T-1223	2.750
T-0730	3.000	T-1030	3.000	T-1130	3.000	T-1230	3.000
T-0731	3.250	T-1031	3.250	T-1131	3.250	T-1231	3.250
T-0732	3.500	T-1032	3.500	T-1132	3.500	T-1232	3.500
T-0733	3.750	T-1033	3.750	T-1133	3.750	T-1233	3.750
T-0740	4.000	T-1040	4.000	T-1140	4.000	T-1240	4.000
T-0742	4.500	T-1042	4.500	T-1142	4.500	T-1242	4.500
T-0750	5.000	T-1050	5.000	T-1150	5.000	T-1250	5.000
T-0752	5.500	T-1052	5.500	T-1152	5.500	T-1252	5.500
T-0760	6.000	T-1060	6.000	T-1160	6.000	T-1260	6.000
A = .750 +.000 / -.010 C = .250 D = 1.000 E = 1.000 Tap Size = 5/16-18	A = 1.000 +.000 / -.010 C = .250 D = 1.250 E = 1.250 Tap Size = 3/8-16	A = 1.250 +.000 / -.010 C = .500 D = 1.625 E = 1.250 Tap Size = 1/2-13	A = 1.500 +.000 / -.010 C = .500 D = 1.875 E = 1.250 Tap Size = 5/8-11				

12L14CRS Material - Hardened to .005/.010 Case Depth

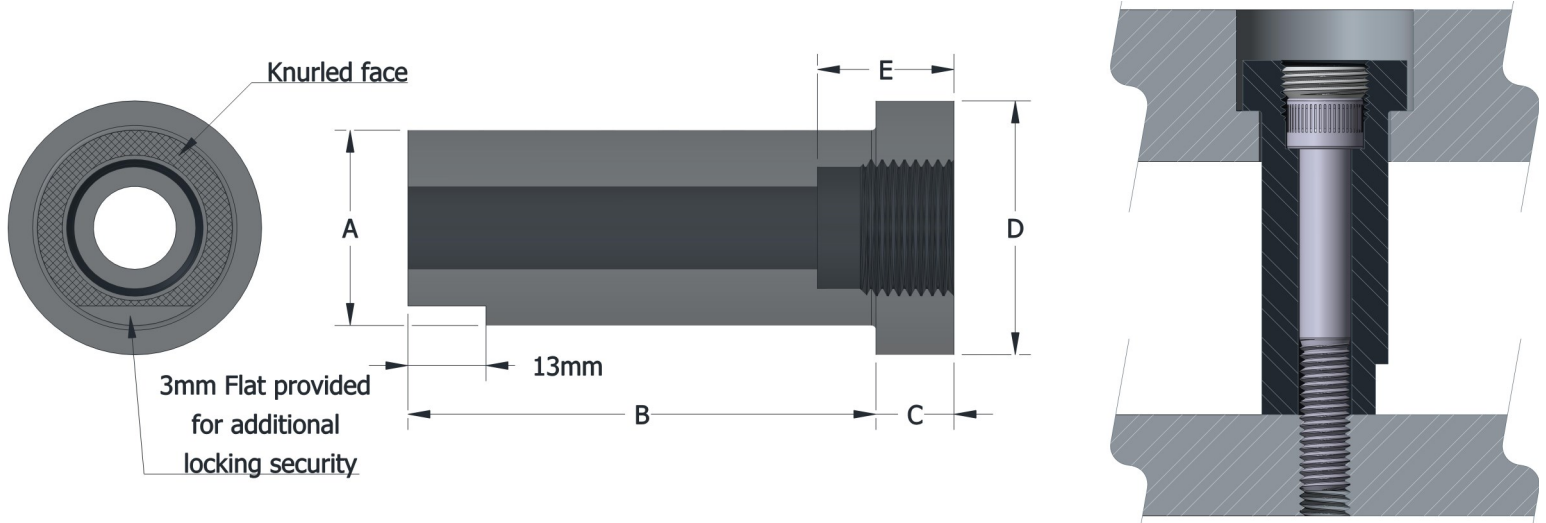
SPOOLS—METRIC COUNTERBORED STYLE



Part No.	B +/- .13	E	Part No.	B +/- .13	E	Part No.	B +/- .13	E
MCB-2030	30	15	MCB-2530	30	15			
MCB-2035	35	15	MCB-2535	35	15			
MCB-2040	40	15	MCB-2540	40	15	MCB-3240	40	16
MCB-2045	45	15	MCB-2545	45	15	MCB-3245	45	16
MCB-2050	50	15	MCB-2550	50	15	MCB-3250	50	16
MCB-2060	60	15	MCB-2560	60	15	MCB-3260	60	16
MCB-2065	65	15	MCB-2565	65	15	MCB-3265	65	16
MCB-2070	70	15	MCB-2570	70	15	MCB-3270	70	16
MCB-2080	80	27	MCB-2580	80	27	MCB-3280	80	32
MCB-2090	90	27	MCB-2590	90	27	MCB-3290	90	32
MCB-20100	100	27	MCB-25100	100	27	MCB-32100	100	32
MCB-20110	110	27	MCB-25110	110	27	MCB-32110	110	32
MCB-20120	120	27	MCB-25120	120	27	MCB-32120	120	32
MCB-20130	130	27	MCB-25130	130	27	MCB-32130	130	32
MCB-20140	140	27	MCB-25140	140	27	MCB-32140	140	32
MCB-20150	150	27	MCB-25150	150	27	MCB-32150	150	32
A = 20 +.00 / -.26 C = 10 D = 28 Screw Size = M8			A = 25 +.00 / -.26 C = 13 D = 33 Screw Size = M10			A = 32 +.00 / -.26 C = 13 D = 40 Screw Size = M12		

12L14CRS Material - Hardened to .13/.25 Case Depth

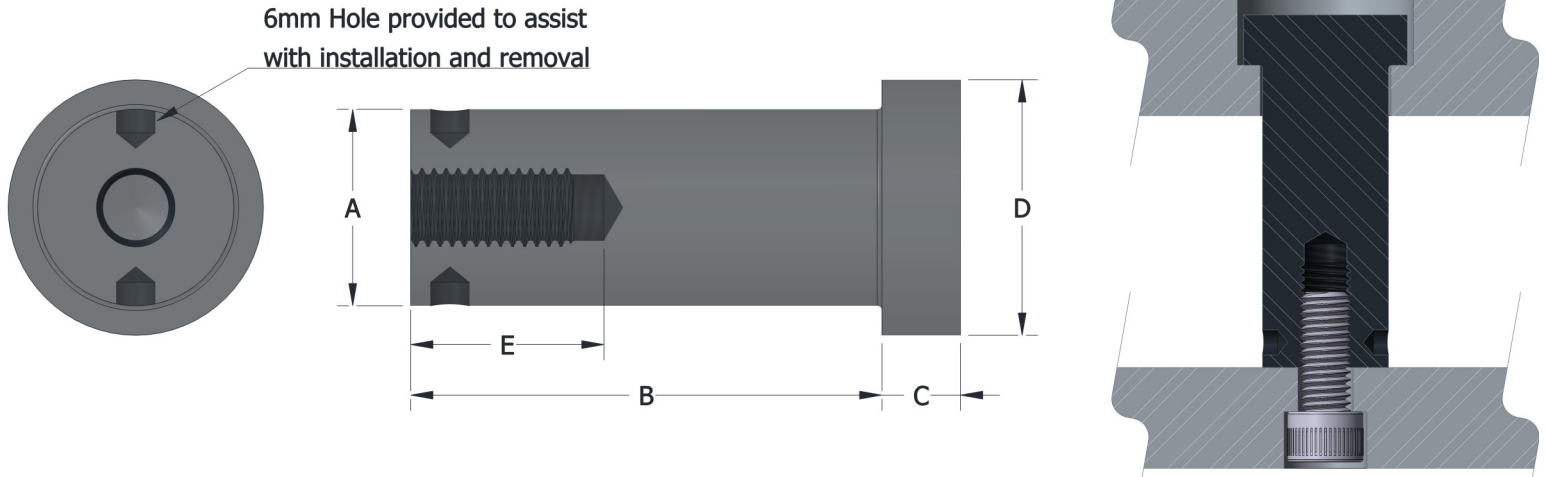
SPOOLS—METRIC LOCKING STYLE



Part No.	B +/- .13mm	Part No.	B +/- .13mm
AJ-2540M	40	AJ-3240M	40
AJ-2545M	45	AJ-3245M	45
AJ-2550M	50	AJ-3250M	50
AJ-2555M	55	AJ-3255M	55
AJ-2560M	60	AJ-3260M	60
AJ-2565M	65	AJ-3265M	65
AJ-2570M	70	AJ-3270M	70
AJ-2580M	80	AJ-3280M	80
AJ-2590M	90	AJ-3290M	90
AJ-25100M	100	AJ-32100M	100
AJ-25110M	110	AJ-32110M	110
AJ-25120M	120	AJ-32120M	120
AJ-25130M	130	AJ-32130M	130
AJ-25140M	140	AJ-32140M	140
AJ-25150M	150	AJ-32150M	150
A = 25 +.00 / -.26 C = 13 D = 33 E = 25 Lock Screw and M10 Cap Screw Included		A = 32 +.00 / -.26 C = 13 D = 40 E = 32 Lock Screw and M12 Cap Screw Included	

12L14CRS Material - Hardened to .13/.25 Case Depth

SPOOLS—METRIC THREADED STYLE



Part No.	B +/- .13mm	Part No.	B +/- .13mm	Part No.	B +/- .13mm
T-2040M	40	T-2540M	40	T-3240M	40
T-2045M	45	T-2545M	45	T-3245M	45
T-2050M	50	T-2550M	50	T-3250M	50
T-2055M	55	T-2555M	55	T-3255M	55
T-2060M	60	T-2560M	60	T-3260M	60
T-2065M	65	T-2565M	65	T-3265M	65
T-2070M	70	T-2570M	70	T-3270M	70
T-2080M	80	T-2580M	80	T-3280M	80
T-2090M	90	T-2590M	90	T-3290M	90
T-20100M	100	T-25100M	100	T-32100M	100
T-20110M	110	T-25110M	110	T-32110M	110
T-20120M	120	T-25120M	120	T-32120M	120
T-20130M	130	T-25130M	130	T-32130M	130
T-20140M	140	T-25140M	140	T-32140M	140
T-20150M	150	T-25150M	150	T-32150M	150
A = 20 +.00 / -.26 C = 10 D = 26 E = 25 Tap Size = M8		A = 25 +.00 / -.26 C = 10 D = 31 E = 32 Tap Size = M10		A = 32 +.00 / -.26 C = 13 D = 38 E = 32 Tap Size = M12	

12L14CRS Material - Hardened to .13/.25 Case Depth